

TOILET FLUSHING GUIDELINES

By following the guidelines on what to flush down your toilet, you can help avoid backups and blockages for yourself and other residents in your area.

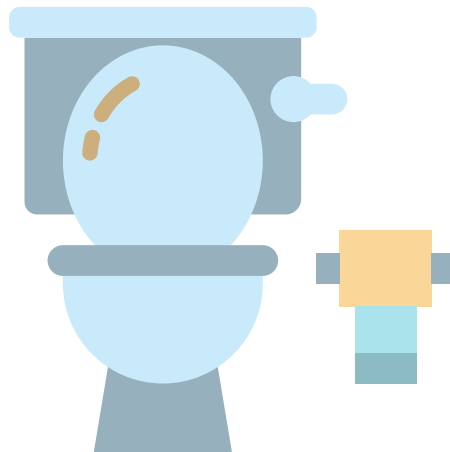
PLEASE **DO NOT** FLUSH THESE ITEMS DOWN YOUR TOILET:

- TRASH SUCH AS WRAPPERS, CANS, PLASTIC, OR BOTTLES
- PAPER TOWEL OR KLEENEX/TISSUE PAPER
- CONDOMS
- OILS, GREASES, AND FATS
- CLEANING WIPES
- DISPOSABLE DIAPERS
- RAGS/TOWELS



PLEASE ONLY FLUSH THESE ITEMS DOWN YOUR TOILET:

- HUMAN WASTE
- TOILET PAPER*



"FLUSHABLE" WIPES ARE NOT AND WILL CLOG SEWER LINES